

mahindra <sup>Rise</sup>

# XUV400 ELPRO

Mahindra & Mahindra LTD., Automotive Sector, Mahindra Tower, 3<sup>rd</sup> Floor, Akurli Road, Kandivali (E), Mumbai - 400101, India. Tel: 022-2884 9588, Fax: 022-28468522  
<https://mahindraelectricautomobile.com/xuv400>

ALL-ELECTRIC.  
ALL-NEW INTERIORS.



INTRODUCING THE ALL-NEW

# XUV400 ELPRO

For any assistance, call us on our With You Hamesha toll-free number 1800 209 6006. Mahindra & Mahindra Ltd. Marketing Office, Mahindra Towers, 3rd Floor, Akurli Road, Kandivali (E), Mumbai 400101  
\*All features mentioned are not available on all models. Accessories shown are not part of standard configuration. Performance figures may differ in conditions other than test conditions. Vehicle body colour may differ from the printed or digital photographs. In view of our policy of continuously improving our products, we reserve the right to alter specifications or designs without prior notice and without liability. We reserve the right to add or delete any feature without prior notice and without any liability. Android Auto is a trademark of Google LLC. To use Android Auto on your car display, you'll need an Android phone running Android 6.0 or higher, an active data plan, and the Android Auto app. Apple CarPlay is compatible only with select mobile devices with iOS operating system. The software and security mechanisms in the vehicle are subject to ongoing developments. Like with computers or the operating systems of mobile devices, the software and security mechanisms in the vehicle may also be updated at irregular intervals.

YouTube @mahindra\_esuv\_xuv400 Facebook Mahindra XUV400 Instagram @mahindraxuv400 Twitter @Mahindra\_XUV400



EXQUISITE OUTSIDE.  
EXCITING INSIDE.

- | 26.04 CM (10.25") TOUCHSCREEN INFOTAINMENT (WITH ALEXA<sup>®</sup>)
- | WIRELESS ANDROID AUTO™
- | WIRELESS APPLE CARPLAY COMPATIBILITY
- | 26.04 CM (10.25") DIGITAL INSTRUMENT CLUSTER
- | ALL-NEW DUAL TONE INTERIORS
- | FLAT BOTTOM STEERING WHEEL

\*Coming soon as OTA update



FUN

FAST

FEARLESS

PERFORMANCE.  
**UNMATCHED.**

| FASTEST\* ACCELERATION: 0-100 km/h IN 8.3s\*

| INSTANTANEOUS TORQUE: 310 Nm

| 3 INTELLIGENT DRIVE MODES: FUN, FAST, FEARLESS  
WITH SMART STEERING SYSTEM WITH SIMULTANEOUS  
TUNING OF THROTTLE RESPONSE AND REGEN LEVELS

| NO RANGE ANXIETY: 456\* km ON A SINGLE CHARGE  
(MIDC PART 1)



| BEST-IN-CLASS CABIN SPACE

| DUAL ZONE AUTOMATIC  
TEMPERATURE CONTROL

| CRUISE CONTROL

| FIRST-IN-SEGMENT SINGLE  
PEDAL DRIVE MODE

| REAR AC VENTS

| REAR USB WITH MOBILE HOLDER

| NEW PREMIUM  
LEATHERETTE SEATS WITH  
SATIN COPPER INSERTS

| ELECTRIC SUNROOF

| 60:40 REAR SEATS

| MONOSTABLE SHIFTER

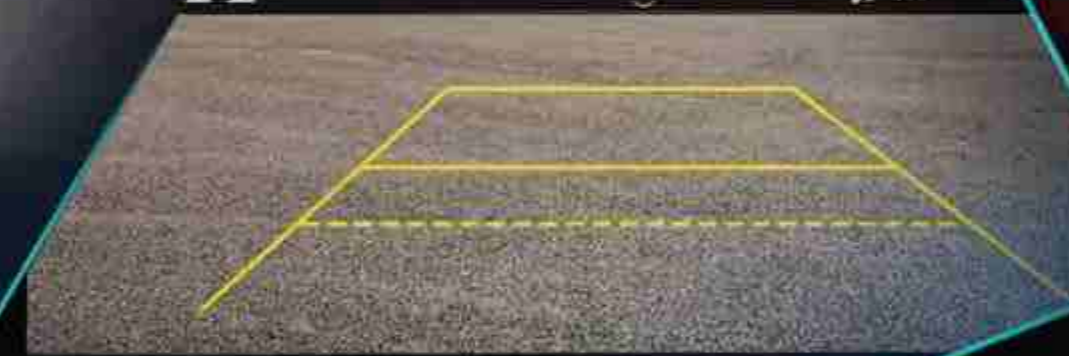
COMFORT.  
UNPARALLELED.



## SIGNATURE MAHINDRA SAFETY

- 6 AIRBAGS
- ELECTRONIC STABILITY PROGRAM (ESP) WITH HILL HOLD ASSIST
- TYRE PRESSURE MONITORING SYSTEM (TPMS)
- IP67 COMPLIANT INGRESS PROTECTION FOR BATTERY AND MOTOR
- ALL 4-DISC BRAKES
- AUTO DIMMING IRVM
- STATE-OF-THE-ART BATTERY PACK DESIGN WITH LIQUID COOLING
- CRASH DETECTION AND CUT-OFF SAFETY VIA PYRO SENSOR
- EFFICIENT THERMAL MANAGEMENT
- REAR VIEW CAMERA (WITH ADAPTIVE GUIDELINES\*)

REAR VIEW CAMERA (WITH ADAPTIVE GUIDELINES\*)



TYRE PRESSURE MONITORING SYSTEM (TPMS)





AUTHENTIC MAHINDRA SUV.  
**ALL-ELECTRIC POWERTRAIN.**

- | C-SEGMENT e-SUV - LENGTH: 4.2m
- | BEST-IN-CLASS WIDTH: 1821mm
- | BEST-IN-CLASS WHEELBASE: 2600mm
- | EXCLUSIVE SATIN COPPER INSERTS
- | LED TAIL LAMPS AND PROJECTOR HEADLAMPS WITH DRLS
- | R16 DIAMOND CUT ALLOY WHEELS
- | FRONT FOG LAMP
- | BOOT LAMP
- | SHARK FIN ANTENNA





- | THE ADRENOX TOUCH
- | WIRELESS CHARGING PAD
- | 55+ CONNECTED CAR FEATURES
- | SMARTWATCH CONNECTIVITY
- | CHARGE ASSIST: ACCESS TO MAHINDRA CHARGING PARTNER NETWORK THROUGH OCPI



CHARGE AHEAD.  
**EFFORTLESSLY.**  
 EXPERIENCE EFFORTLESS JOURNEYS  
 WITH A VARIETY OF  
 CHARGING ALTERNATIVES

STAY CONNECTED.  
**STAY AHEAD.**

LOCATION	MODE	TYPE	TIME
HOME	AC	3.3 kW	13.5 HOURS*
HOME	AC	7.2 kW	6.5 HOURS*
PUBLIC	DC	50 kW	50 MINUTES*

OPEN CHARGE POINT INTERFACE (OCPI) ALLOWS THE USER TO SEARCH AND NAVIGATE TO THE NEAREST CHARGING STATION AND ENABLES THE VEHICLE TO CHARGE IN A PUBLIC CHARGING STATION.

\*Under test ambient conditions

# FEATURES & VARIANT WALK

SPECIFICATIONS	XUV400 EC PRO	XUV400 EL PRO
<b>ELECTRIC DRIVETRAIN</b>		
ELECTRIC MOTOR (TYPE)	PERMANENT MAGNET SYNCHRONOUS MOTOR (PMSM)	
MAX ELECTRIC MOTOR POWER kW (PS)	110 kW (150 PS)	
MAX ELECTRIC MOTOR TORQUE (Nm)	310 Nm	
ACCELERATION (0-100 KM/H IN SECONDS)	8.3 SECONDS	
DRIVE MODES	(34.5 kWh) FUN & FAST	(39.4 kWh) FUN, FAST & FEARLESS
	THESE TUNE THE RESPONSE OF STEERING, THROTTLE & REGEN LEVELS	
<b>BATTERY</b>		
TYPE	HIGH ENERGY DENSITY LITHIUM-ION BATTERY PACK	
CAPACITY	34.5 kWh	34.5 - 39.5 kWh
INGRESS PROTECTION FOR MOTOR & BATTERY PACK	IP67	
RANGE	375 km (MIDC PART 1)	375-456 km (MIDC PART 1)
THERMAL MANAGEMENT SYSTEM	LIQUID COOLED AND HEATED	
<b>DRIVE TYPE</b>		
FRONT WHEEL DRIVE		
TRANSMISSION	SHIFT-BY-WIRE AUTOMATIC TRANSMISSION	
	"L" MODE FOR SINGLE PEDAL DRIVE	
EMISSION	ZERO TAILPIPE EMISSION	
STEERING	ELECTRIC POWER STEERING	
<b>BRAKES</b>		
FRONT	DISC	
REAR	DISC	
<b>CHARGING</b>		
CHARGER CONNECTION TYPE	CC52	
PORTABLE CHARGING CABLE	YES	
CHARGING OPTIONS	HOME, 3.3 kW AC WALLBOX, 7.2 kW AC WALLBOX, DC FAST CHARGER	
CHARGER TYPE INCLUDED	3.3 kW AC WALLBOX	7.2 kW AC WALLBOX
<b>DIMENSIONS</b>		
LENGTH	4200 mm	
WIDTH	1821 mm	
HEIGHT	1634 mm	
WHEELBASE	2600 mm	
BOOT VOLUME	378 L	
<b>SUSPENSION</b>		
FRONT SUSPENSION	MACPHERSON STRUT WITH ANTI-ROLL BAR	
REAR SUSPENSION	TWIST BEAM WITH COIL SPRING	
SUSPENSION ENHANCEMENTS	FREQUENCY DEPENDENT DAMPING (FDD) AND MULTI-TUNABLE VALVE WITH CONCENTRIC LAND (MTV-CL)	
<b>WHEELS</b>		
WHEEL SIZE	205/65 R16	
SPARE WHEEL SIZE	T35/90 R16	
<b>WARRANTY</b>		
BATTERY PACK AND MOTOR WARRANTY	8 YEARS OR 1,60,000 km*	
VEHICLE WARRANTY	3 YEARS OR UNLIMITED km*	

\*whichever is earlier

## EC PRO

R16 STEEL WHEELS WITH COVER  
LED TAIL LAMPS  
LED TURN INDICATORS ON ORVMS  
ALL-NEW DUAL TONE INTERIORS  
BODY COLOURED DOOR HANDLES  
BLACK ORVMS  
BILL & WHEEL ARCH CLADDING  
REAR SPOILER  
PREMIUM FABRIC SEAT UPHOLSTERY  
50:50 SPLIT 2ND ROW  
PADDED FRONT ARMREST WITH STORAGE  
REAR AC VENTS  
REAR USB C-TYPE PORT WITH MOBILE HOLDER  
FRONT USB CHARGING POINT  
12V ACCESSORY SOCKET  
HEIGHT-ADJUSTABLE FRONT SEAT BELTS  
ADJUSTABLE HEADREST FOR 2ND ROW WINDOW SEATS  
BOTTLE HOLDER ON ALL 4 DOORS  
CONNECTED CAR TECHNOLOGY  
DUAL ZONE AUTOMATIC TEMPERATURE CONTROL  
DRIVE MODES - FUN AND FAST  
SMART STEERING SYSTEM  
SUPERVISION CLUSTER WITH 8.89cm SCREEN  
CENTRAL LOCKING  
PASSIVE KEYLESS ENTRY  
PUSH BUTTON START/ STOP  
ELECTRICALLY ADJUSTABLE ORVMS  
TYRE-POSITION DISPLAY  
FRONT & REAR POWER WINDOWS  
EXTENDED POWER WINDOW OPERATION  
1-TOUCH LANE CHANGE INDICATOR  
DUAL AIRBAGS (DRIVER & PASSENGER)  
ELECTRONIC STABILITY PROGRAM (ESP)  
ABS & EBD  
TYRE PRESSURE MONITORING SYSTEM (TPMS)  
ALL 4 DISC BRAKES  
ISOFIX/CHILD ANCHORS  
SEAT BELT REMINDER FOR CO-DRIVER  
FRONT SEAT BELTS WITH PRE-TENSIONER & LOAD-LIMITER  
SPEED SENSING DOOR LOCK  
IMPACT SENSING DOOR UNLOCK  
IMMOBILIZER  
PANIC BRAKING SIGNAL  
PASSENGER AIRBAG DEACTIVATION SWITCH  
BOOT LAMP  
REAR PARKING SENSORS

## EL PRO

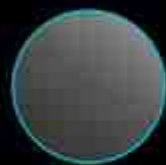
ADDITION TO EC FEATURES  
R18 DIAMOND CUT ALLOY WHEELS  
PROJECTOR HEADLAMPS + LED DRLs  
FRONT FDG LAMP  
ROOF RAILS  
SHARK FIN ANTENNA  
LEATHERETTE SEATS WITH COPPER STITCH  
LEATHER STEERING WHEEL  
ELECTRIC SUNROOF WITH ANTI-PINCH  
STEERING MOUNTED PHONE & AUDIO CONTROLS  
HEIGHT-ADJUSTABLE DRIVER SEAT  
ILLUMINATED SUNVISORS WITH VANITY MIRRORS (CO-DRIVER SIDE)  
CONSOLE ROOF LAMP  
FRONT USB CHARGING POINTS - 2  
ADJUSTABLE HEADREST FOR 2ND ROW MIDDLE SEATS  
BUNGEE STRAP FOR STOWAGE  
SUNGLASS HOLDER  
2ND ROW ARMREST WITH CUPHOLDERS  
55+ ADRENEX - CONNECTED CAR FEATURES  
WIRELESS CHARGER  
26.04cm (10.25") HD INFOTAINMENT TOUCHSCREEN  
26.04cm (10.25") FULLY DIGITAL INSTRUMENT CLUSTER  
WIRELESS ANDROID AUTO™  
WIRELESS APPLE CARPLAY COMPATIBILITY  
ALEXA\*  
BLUETOOTH/ USB CONNECTIVITY  
4 SPEAKERS & 2 TWEETERS  
SMARTWATCH CONNECTIVITY  
REVERSE CAMERA (WITH ADAPTIVE GUIDELINES)  
ELECTRICALLY ADJUSTABLE & FOLDABLE ORVMS  
FOLLOW-ME-HOME & LEAD-ME LAMPS  
INTELLIGENT LIGHT-SENSING HEADLAMPS  
SMART RAIN-SENSING WIPERS  
VOICE COMMANDS & SMS READ OUT  
6 AIRBAGS (DRIVER, PASSENGER & SIDE AIRBAGS)  
REAR DEFOGGER, WASH & WIPER  
HILL HOLD ASSIST



EVEREST  
WHITE



NAPOLI  
BLACK



GALAXY  
GREY



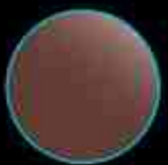
**NEW**  
NEBULA  
BLUE



INFINITY  
BLUE



ARCTIC  
BLUE



DUALTONE  
COPPER ROOF#

\*Satin Copper Roof option available for EL Pro variants only.

#Coming soon as an OTA Update